

# SYSTEMS THAT GIVE LIFE TO THE GROUND

EPOXY, POLYURETHANE & ACRYLIC HYBRID  
SURFACE PROTECTION SYSTEMS

# BRV®

EPOXY & POLYURETHANE  
SYSTEMS



## APPLICATION SYSTEMS

Floor Coating & Painting  
Anti-Corrosive Metal Coating  
Decorative Asphalt & Bicycle Lanes  
Repair & Structural Strengthening  
Architectural Surface Protection  
Concrete Surface Protection  
Waterproof Coating



## **SYSTEMS THAT GIVE LIFE TO THE GROUND** **EPOXY, POLYURETHANE & ACRYLIC HYBRID SURFACE PROTECTION SYSTEMS**

Our principle is to produce world-class, non-hazardous products for human health and to provide the best application services with the products we manufacture. With its fast-reacting structure, it saves time for customers and offers advantages that increase profitability. Experienced professional application teams, strong communication skills, and industry expertise add strength to your business, creating added value.





EPOXY POLYURETHANE FLOOR  
COATING SURFACE PREPARATION MACHINES

## **EPOXY POLYURETHANE FLOORCOATING SYSTEMS**

- \* Epoxy & Polyurethane Self-Leveling Floor Coating
- \* Epoxy Multi-Layer Floor Coating
- \* Antistatic Epoxy Floor Coating
- \* Orange Peel Texture Epoxy Floor Coating
- \* Chemical-Resistant Epoxy & Polyurethane Floor Coating
- \* Epoxy & Polyurethane Floor & Wall Painting

## **APPLICATION AREAS**

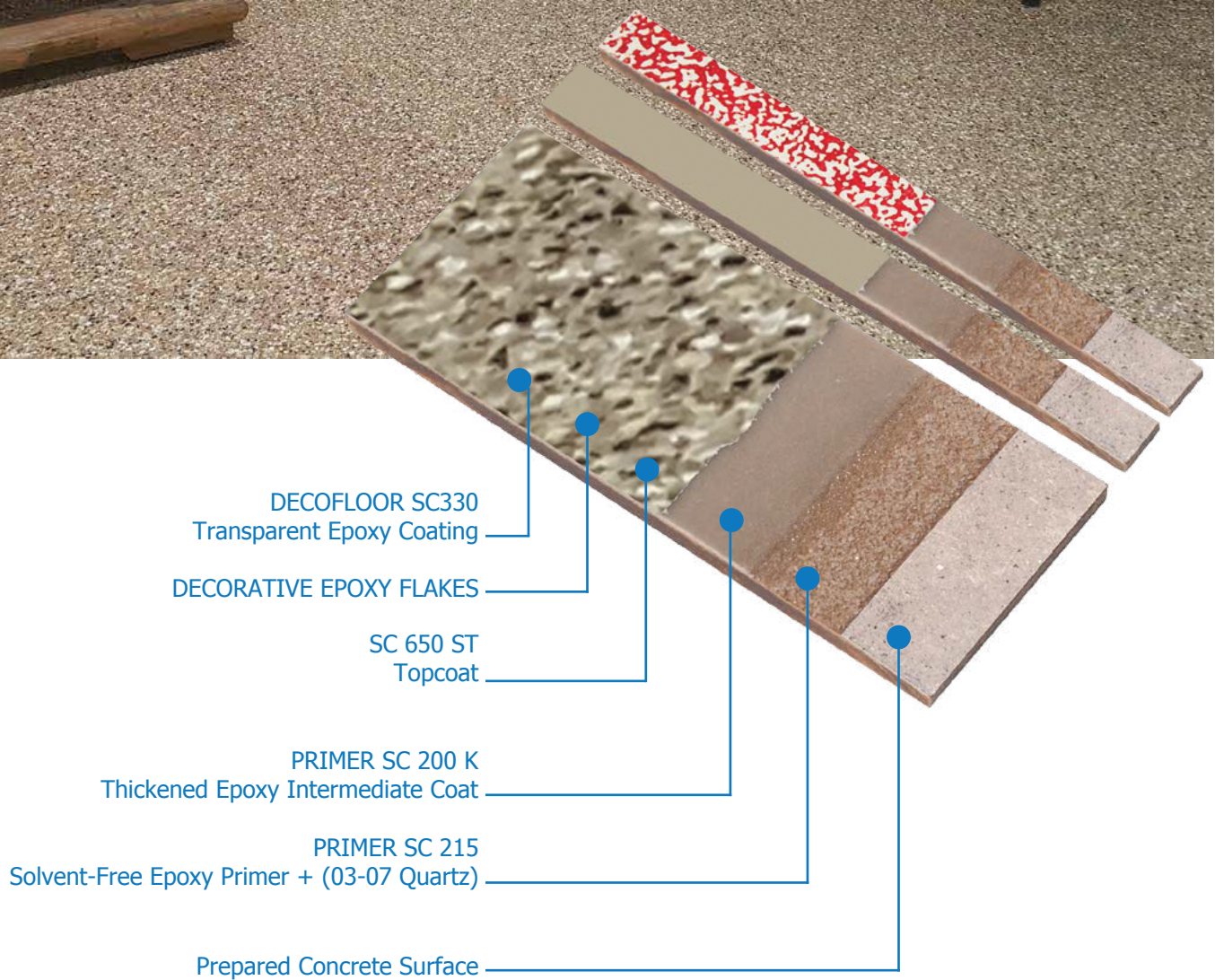
- \* Warehouses
- \* Industrial Production Areas
- \* Garages & Parking Lots
- \* Laboratories
- \* Chemical & Pharmaceutical Production Facilities
- \* Shopping Centers & Supermarkets
- \* Food Production Facilities
- \* Exhibition & Fair Areas
- \* Industrial Kitchens
- \* Gyms
- \* Olympic Swimming Pools
- \* Treatment Plants
- \* Aircraft Hangars

## **ADVANTAGES**

- \* Hygienic and antibacterial
- \* Aesthetic appearance
- \* Seamless, joint-free surface
- \* Dust-free
- \* Easy to clean
- \* High mechanical strength
- \* Resistant to chemicals
- \* Optional non-slip surface
- \* Wide color range
- \* Long-lasting
- \* Easy maintenance











- FLOOR SC 645  
Orange Peel Finish Epoxy Topcoat and Painting
- FLOOR SC 645  
Epoxy Intermediate Coat
- PRIMER SC 215  
Solvent-Free Epoxy Primer + (03-07 Quartz)
- Prepared Concrete Surface



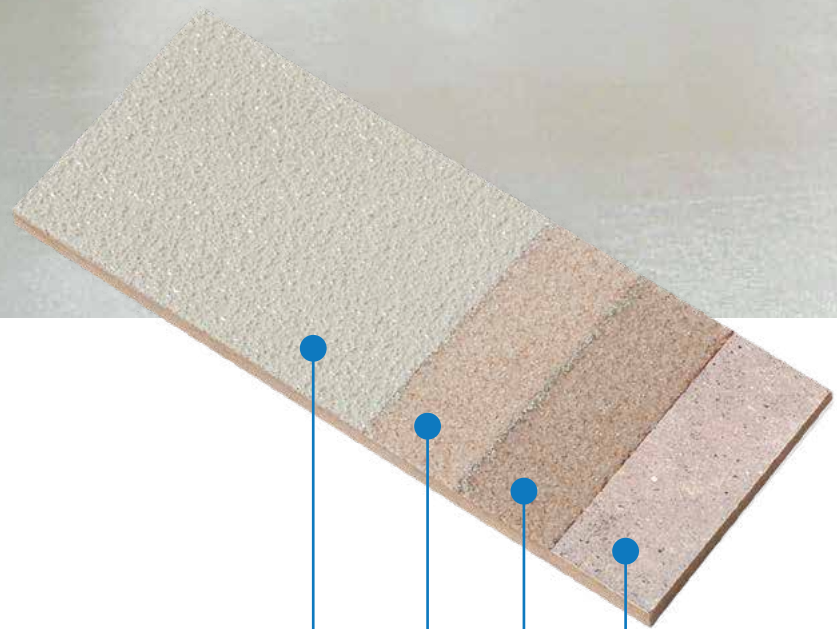
SC 650 ST Epoxy  
Topcoat

PRIMER SC 200 K  
Thickened Epoxy Intermediate Coat

PRIMER SC 215  
Solvent-Free Epoxy Primer + (03-07 Quartz)

Prepared Concrete Surface





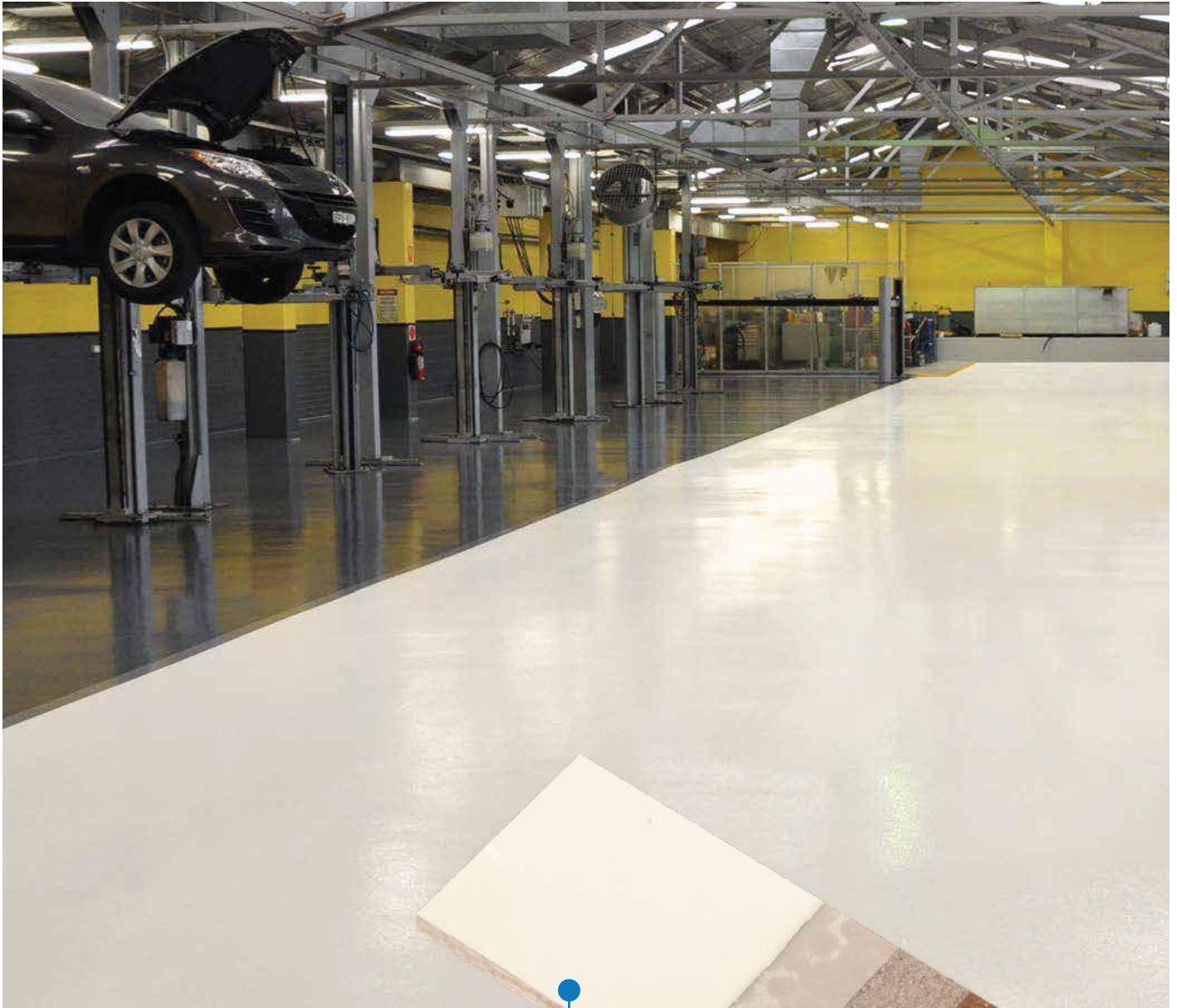
SC 650 ST  
Solvent-Free Epoxy Topcoat

PRIMER SC 215  
Solvent-Free Epoxy Primer + (03-07 Quartz)

PRIMER SC 215  
Solvent-Free Epoxy Primer + (03-07 Quartz)

Prepared Concrete Surface





FLOOR SC 650 ST  
Epoxy Topcoat

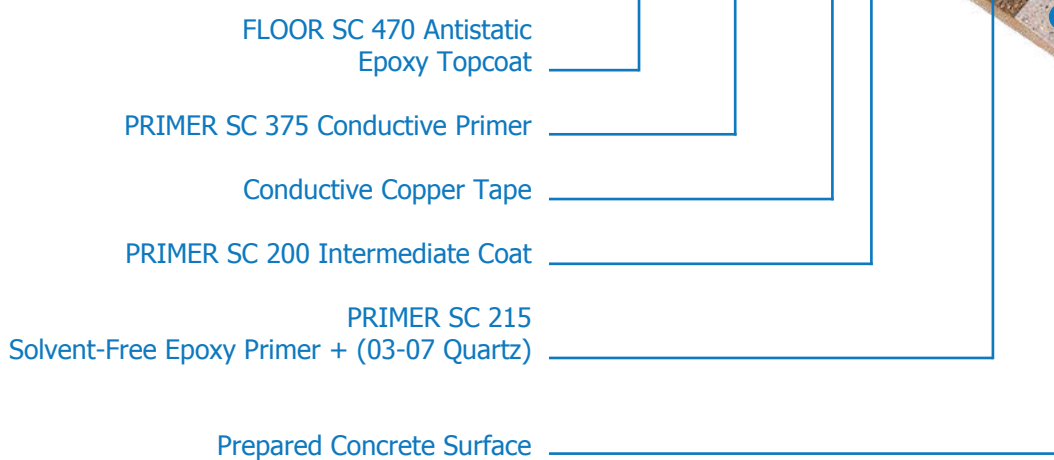
PRIMER SC 200 K Intermediate Coat

PRIMER SC 215  
Solvent-Free Epoxy Primer + (03-07 Quartz)

PRIMER SC 215  
Solvent-Free Epoxy Primer  
+ (225 g Glass Fiber Lamination)

Prepared Concrete Surface

## SELF-LEVELING EPOXY WITH GLASS FIBER LAMINATION INDUSTRIAL FLOOR COATING SYSTEM DIAGRAM







POLIFLEX PU 126  
Polyurethane Protective Flexible Coating  
(Mat or Glossy)

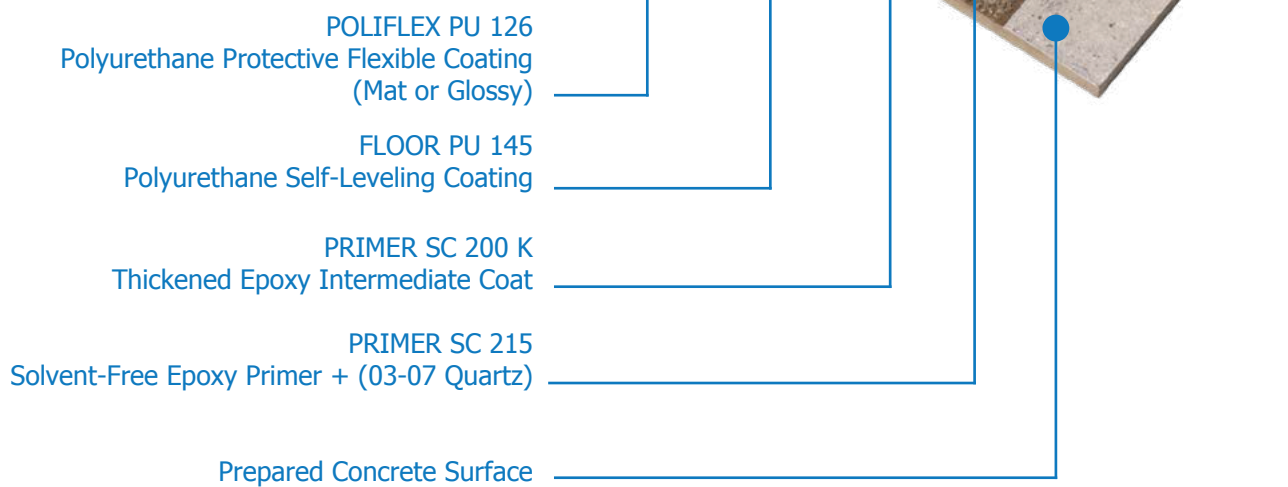
FLOOR PU 145  
Polyurethane Self-Leveling Coating

FLOOR PU 145  
Intermediate Coat

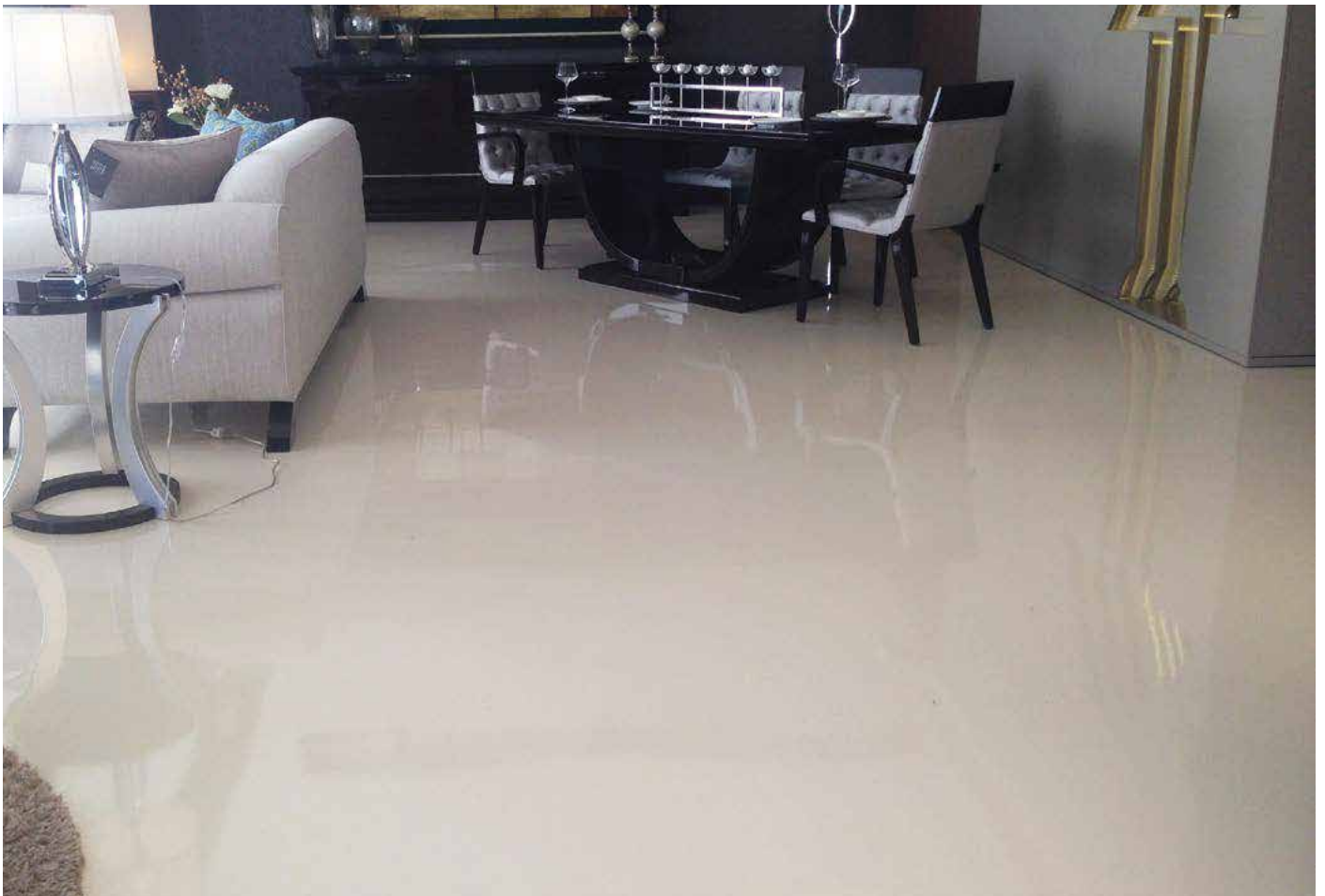
8 mm SBR Rubber Mat

FLEX PU 076  
Polyurethane Adhesive

Prepared Concrete Surface

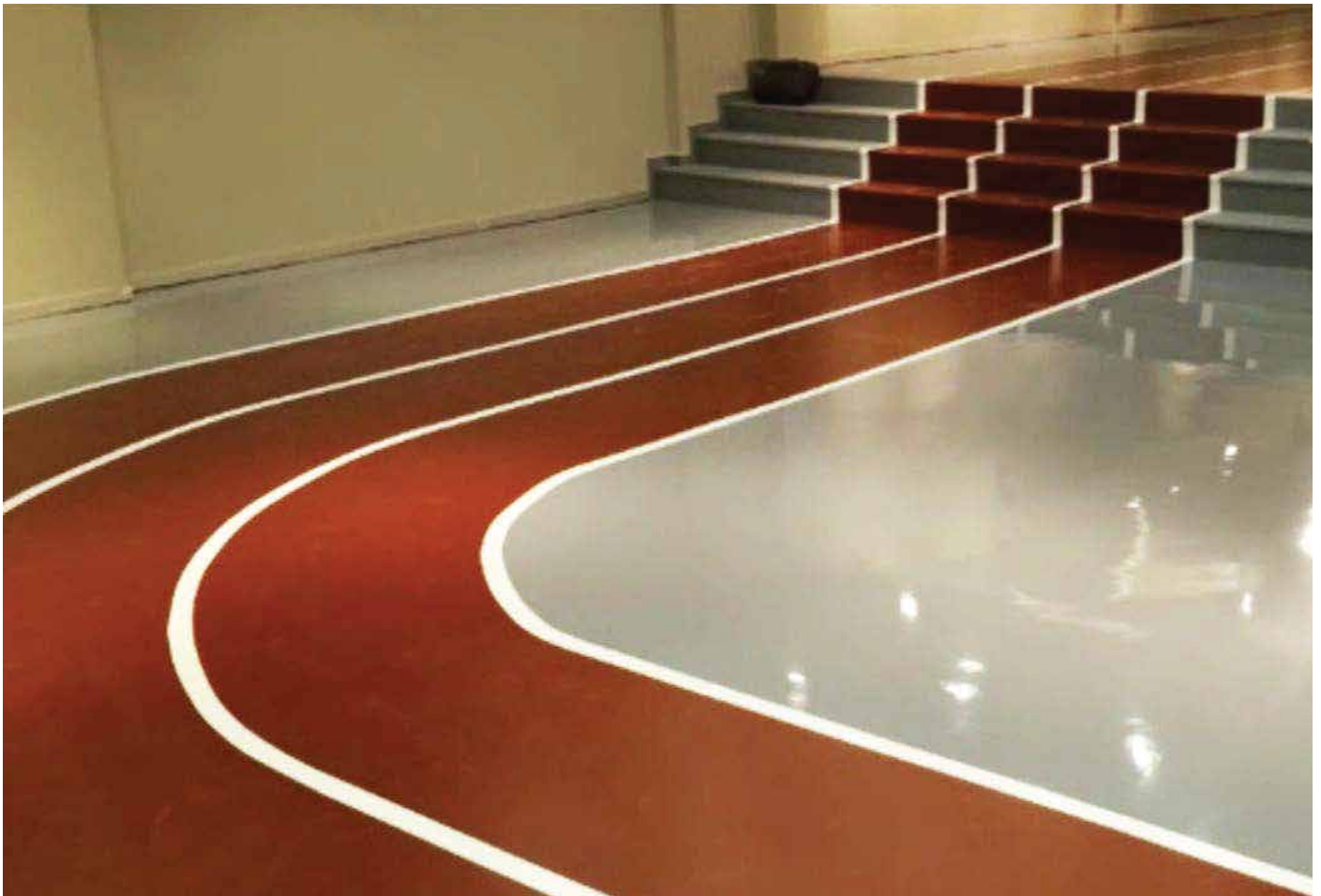






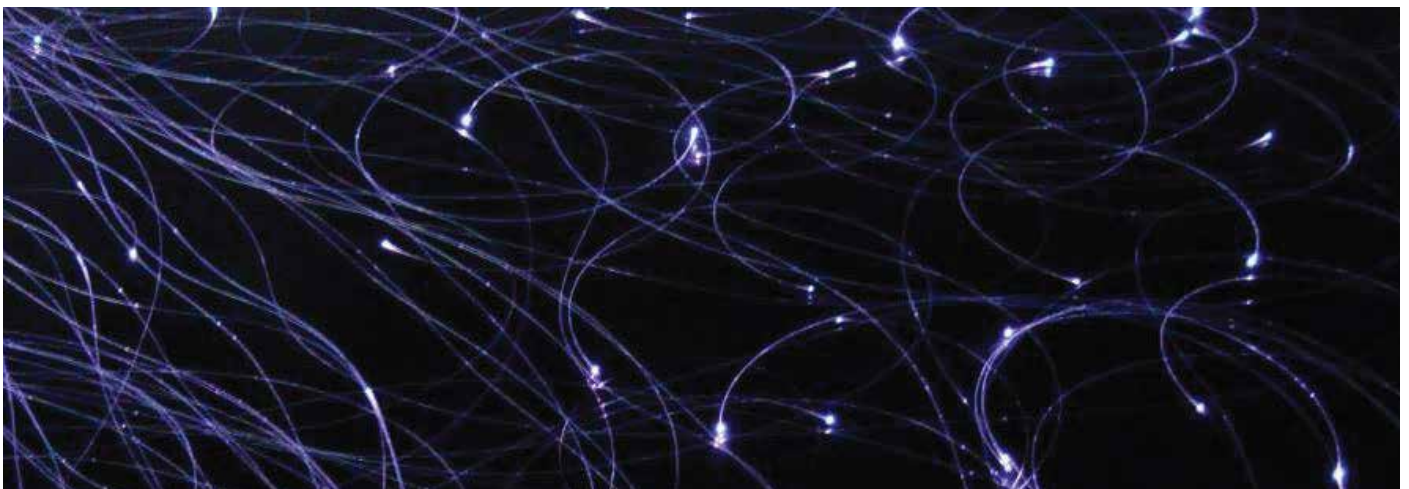
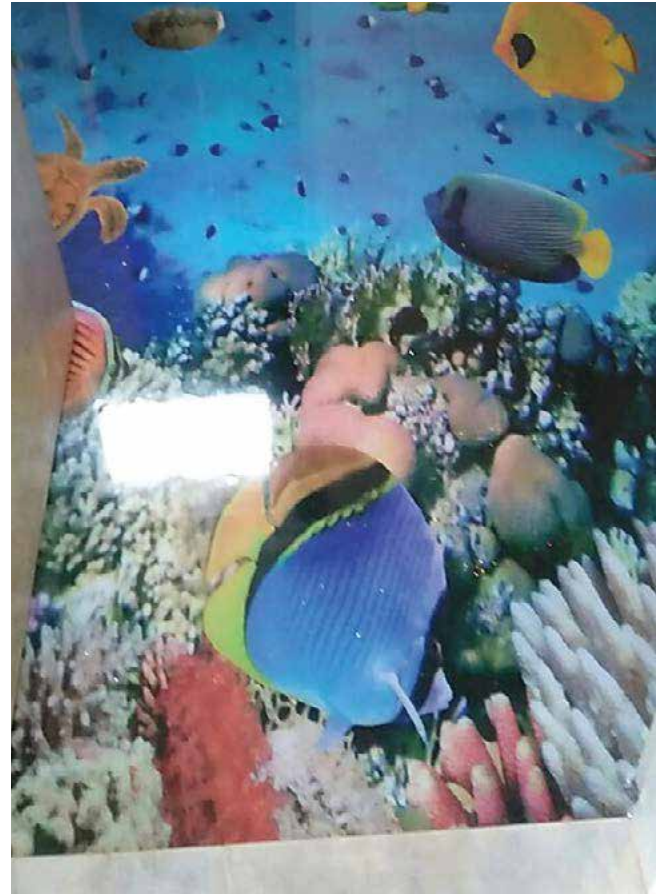
**DECORATIVE**  
Epoxy Floor Coating





**DECORATIVE**  
Epoxy Floor Coating





**DECORATIVE TRANSPARENT**  
Epoxy Floor Coating





**POLYURETHANE SELF-LEVELING**  
Floor Coating





**ANTISTATIC**  
Epoxy Floor Coating



**EPOXY & POLYURETHANE SELF-LEVELING**  
Hospital Floor Coating





**POLYURETHANE SELF-LEVELING**  
Matte Protective Floor Coating



**EPOXY & POLYURETHANE SELF-LEVELING**  
Industrial Floor Coating





## **EPOXY & POLYURETHANE SELF-LEVELING**

Industrial Floor Coating





**EPOXY & POLYURETHANE SELF-LEVELING**  
Industrial Storage Area Floor Coating





**EPOXY & POLYURETHANE SELF-LEVELING**  
Industrial Floor Coating



**EPOXY & POLYURETHANE SELF-LEVELING**  
Pharmaceutical Production Facility Floor Coating





**EPOXY & POLYURETHANE**  
Food Production Facility Floor Coating





## **EPOXY & POLYURETHANE SELF-LEVELING**

Vehicle Maintenance Service Floor Coating



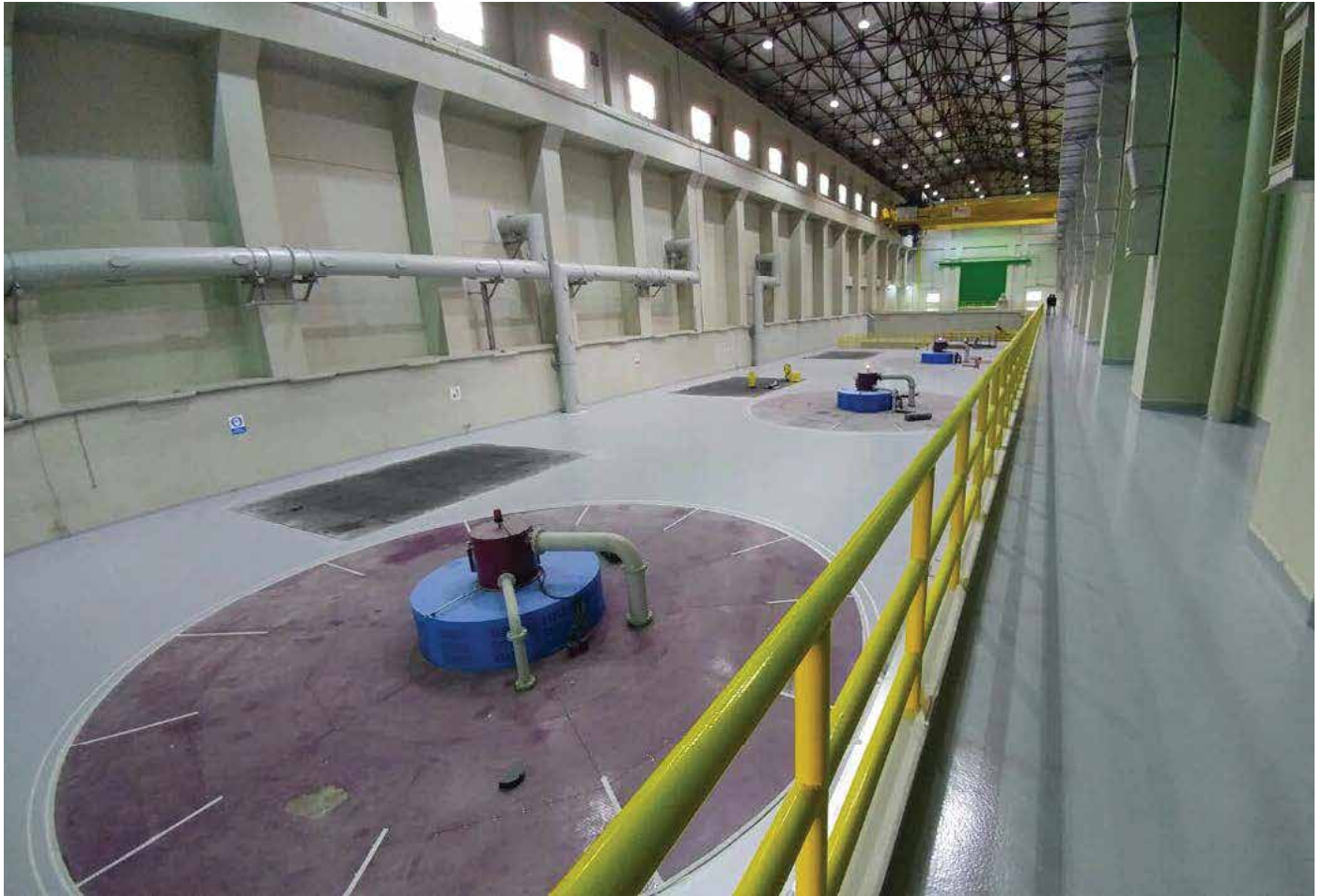


**EPOXY & POLYURETHANE**  
Parking Lot Floor Coating



**EPOXY & POLYURETHANE**  
Traffic Marking Road Line Paint





## **EPOXY & POLYURETHANE SELF-LEVELING**

Hydroelectric Power Plant Flooring





**EPOXY & POLYURETHANE**  
Wastewater Treatment Plant Sedimentation Basin Waterproofing





## EPOXY & POLYURETHANE

Pool Waterproofing, Coating, and Painting



**EPOXY & POLYURETHANE**  
Fiberglass Laminated Pool Coating and Painting





**ACRYLIC**  
Exterior Wall Textured Insulation Coating and Paint



**POLYMER PU MS 1K**  
Flexible Waterproofing Coating





**POLYMER PU MS 1K**  
Flexible Waterproofing Coating





**EPOXY POLYUREA**  
Surface Protective Coating and Painting





**EPOXY POLYUREA**  
Surface Protective Coating and Painting



**EPOXY & POLYURETHANE**  
Concrete Surface Protective Paint





**EPOXY & POLYURETHANE**  
Concrete Surface Protective Paint



**EPOXY & POLYURETHANE**  
Concrete Wall Surface Protective Paint





**BRV**  
Concrete Surface Protection





**BRV**  
Concrete Surface Protection





**BRV**  
Concrete Surface Protection

## BRV SUPER CONCRETE

### 1- SUPER CONCRETE PREMIUM SYSTEM

Dust-free treatment for helicopter-finished concrete surfaces with liquid surface hardener application and light polishing system.



### 2- SUPER CONCRETE LIGHT BRIGHT SYSTEM

Five-step dust-proof and light polishing system for concrete surfaces with exposed aggregate appearance.



### 3- SUPER CONCRETE SEMI GLOSS SYSTEM

Ten-step dust-proof and semi-gloss polishing system for concrete surfaces with exposed aggregate appearance.



### 4- SUPER CONCRETE FULL SHINE SYSTEM

Thirteen-step non-slip, dust-proof, high-gloss full polishing system for concrete surfaces with exposed aggregate appearance.



### NATURAL STONE FULL SHINE SYSTEM

Semi-gloss to full-gloss mechanical polishing system for granite and marble surfaces.



**BRV SUPER CONCRETE**  
Surface Polishing Systems





**BRV SUPER CONCRETE**  
Concrete Surface Polishing





**BRV SUPER CONCRETE**  
Concrete Surface Polishing





**EPOXY & POLYURETHANE**  
Anti-Corrosive Metal Surface Protective Coating





**EPOXY & POLYURETHANE**  
Metal Surface Protective Coating and Painting





## **EPOXY & POLYURETHANE**

Amphitheater and Stadium Stand Flooring Coating and Painting





**POLYURETHANE**  
Indoor Sports Hall Flooring Coating and Painting





**ACRYLIC**  
Outdoor Sports Area Coating and Painting





**WATER-BASED EPOXY**  
Concrete and Asphalt Coating and Painting



